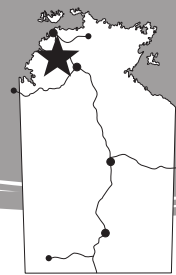


Butterfly Gorge Nature Park



Fact Sheet

Butterfly Gorge is tucked away at the base of a low sandstone plateau. The sheer rock faces, edged by dense riparian vegetation and rocky spinifex country, offer shaded riverside walks and beautiful scenery.

The Wagiman people speak for this place. Their ancestors are one with the land.

Make your way along the river to the entrance of the Gorge. At times you may be the only visitors and will be able to experience the true tranquillity and isolation of this beautiful spot.

The Park protects part of the Douglas River which eventually flows into the Daly River about 50 km downstream.

Past logging industries removed many of the huge Melaleucas. The timber was used to build the Stokes Hill Wharf in Darwin.

Access (see map)

Park entry fees - Parks Pass applies. (NT residents exempt).

The Park is approximately 200 km from both Darwin and Katherine, and is close to Tjuwaliyn (Douglas) Hot Springs. From the Stuart Highway, take the Dorat Rd Scenic Route. The final 17 km into the Park is a 4WD track. Caravans cannot be taken into this Park.

Consult maps and check road conditions prior to your visit on 1800 246 199 or visit www.roadreport.nt.gov.au

When to Visit

It is only possible to visit the Park during the dry season (May - October). Heavy rains close the Park each year.

What to See and Do



Lookout Walk

Distance: 5 km return

Time: 2 hours

Grade: 4 - moderate to difficult

This short walk starts at the carpark and takes you through the forest and up a steep rocky escarpment offering views of the Gorge. Keep an eye out for wildlife along the way. You may see butterflies and a variety of birdlife that are sustained by this river system.



No swimming.

Saltwater crocodiles inhabit the river and waterways of this Park. Heed all signs and warnings.



No Camping at Butterfly

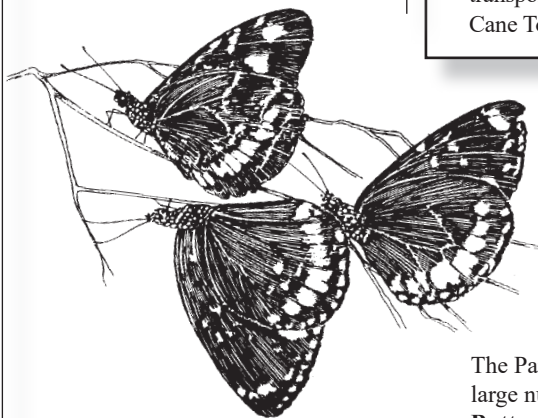
Gorge. Camping is available at Douglas River / Daly River Esplanade Conservation Area. Camp sites must be pre-booked and paid for online.

Safety and Comfort

- **NO SWIMMING** - Saltwater Crocodiles inhabit these waters. **Be Crocwise.**
- Observe park safety signs.
- Carry and drink plenty of water.
- Wear a shady hat, sunscreen and insect repellent.
- Wear suitable clothing and footwear.
- Carry a first aid kit.
- Avoid strenuous activity during the heat of the day.
- Ensure your vehicle is well maintained and equipped.

Please Remember

- No bins are provided, please take your rubbish away with you.
- Keep to designated roads and tracks.
- All cultural items and wildlife are protected.
- Pets are not permitted in this Park.
- A permit is required for Drone use - conditions apply and it must be obtained before you arrive in the Park.
- Nets, traps and firearms are not permitted.
- Camping is not permitted.
- Rock climbing and abseiling are not permitted.
- Check that your vehicle is not transporting pests like weeds and Cane Toads.



The Park's name comes from the large number of **Common Crow Butterflies** *Euploea core corinna* which shelter in the vegetation.

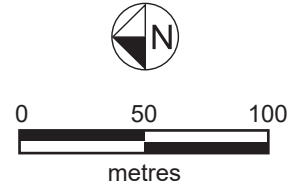
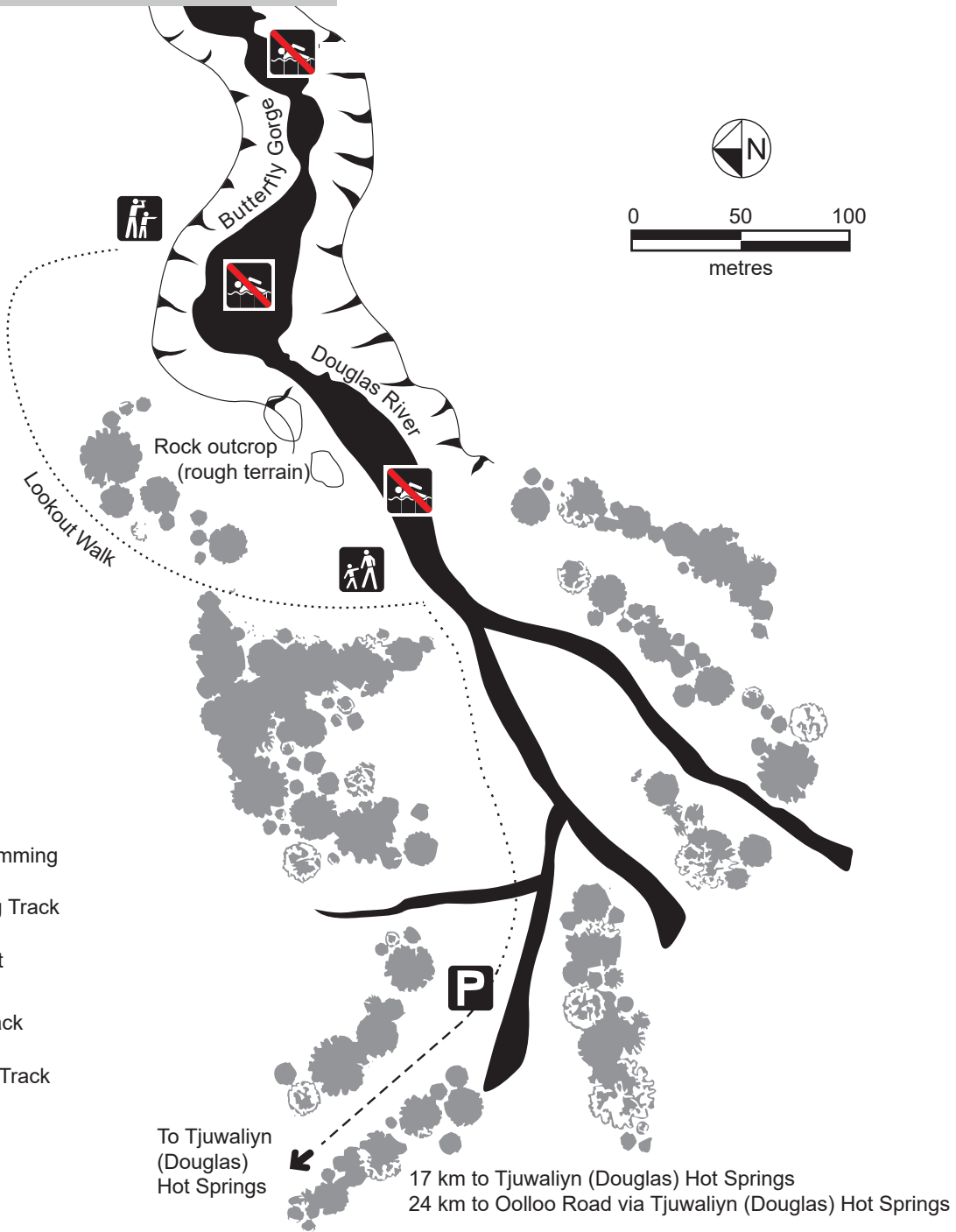
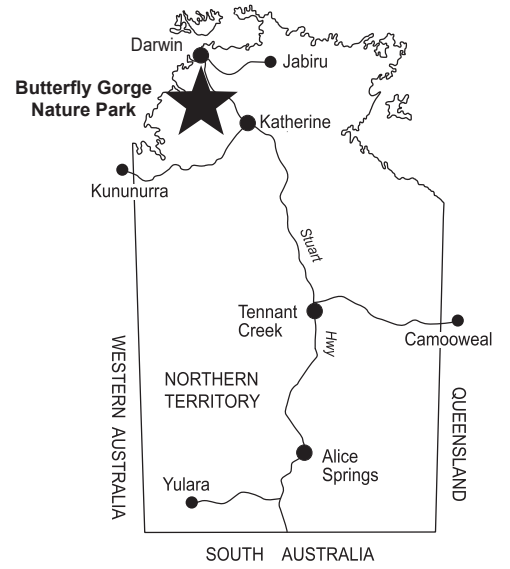
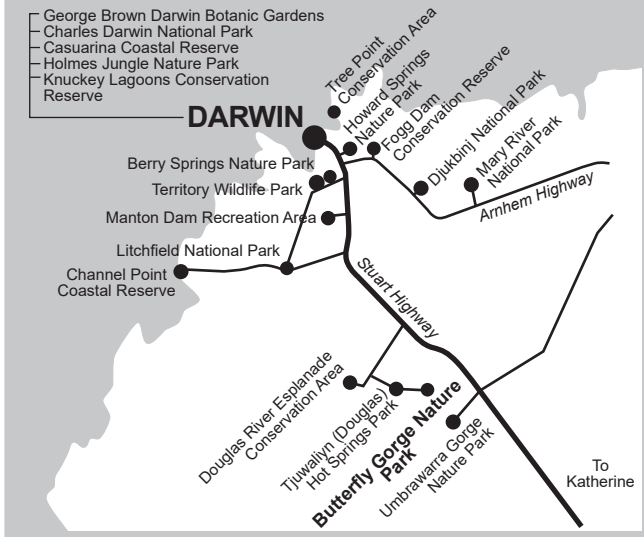
Parks & Wildlife Commission of the Northern Territory

nt.gov.au/parks
nt.gov.au/park-bookings
PO Box 496
PALMERSTON NT 0831

Regional Office - 4th floor Goyder Building
25 Chung Wah Terrace,
Palmerston, NT, 0830
Ph: (08) 8999 4555



Butterfly Gorge Nature Park



LEGEND

- Parking
- No Swimming
- Walking Track
- Lookout
- 4WD Track
- Walking Track