

Local Notice to Mariners

Barossa Project: 'Sandpiper' pipe lay barge closed waters (exclusion zone)

To	Port Users	Location	West Side Darwin Harbour
Date of issue	28 October 2024	Ref number	Local NtM 2024 - 111 (T)

Notification

Port Users are advised the shallow water pipe lay barge '**Sandpiper**' will lay 30km of pipe through the port of Darwin in the area shown in blue the attached sketch.

Due to the extent of the reach of the Sandpipers anchor mooring system a closed waters (exclusion zone) of 1000 m ahead and astern and 500 m either side of the vessel in now in force.

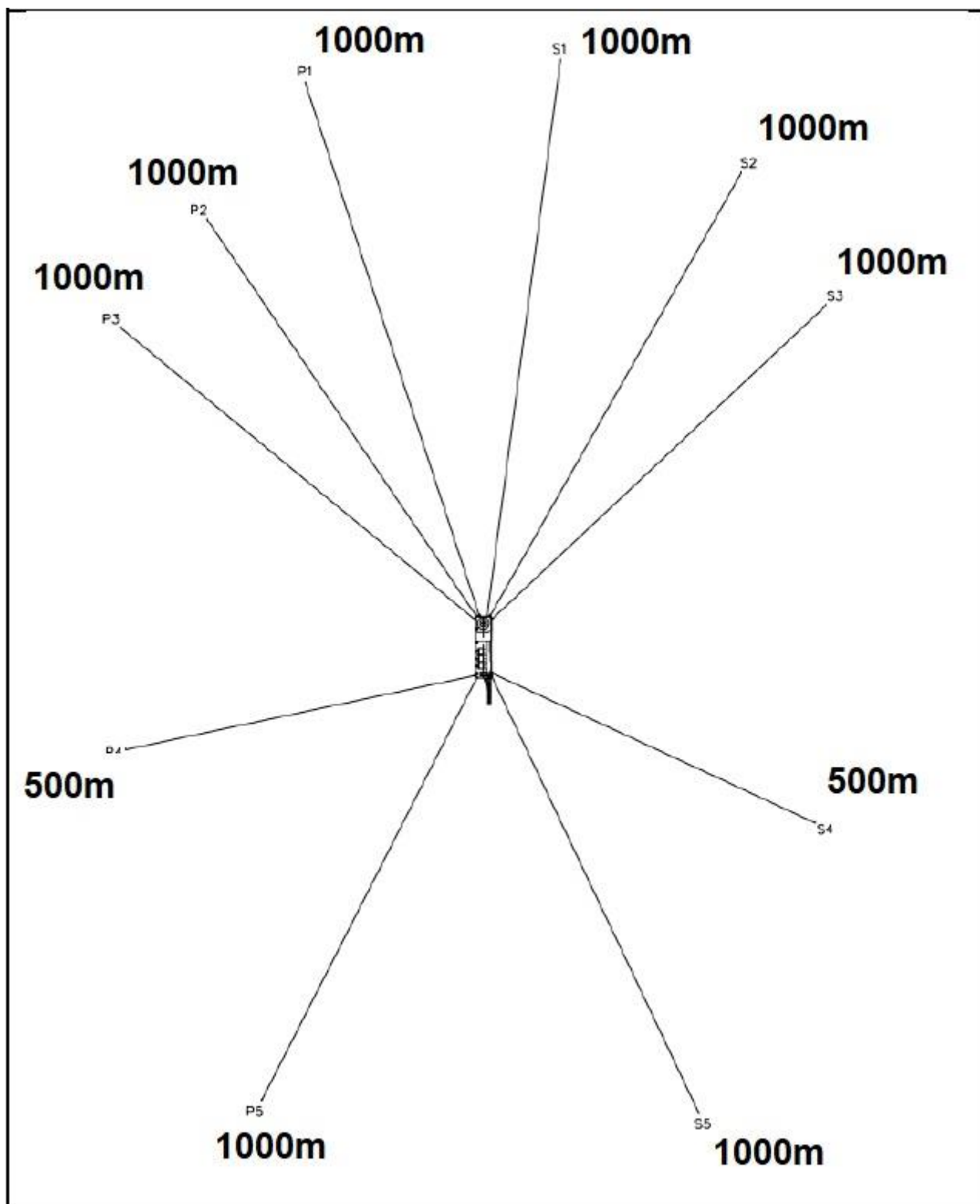
Date of activity:	Commenced 18 October 2024
Time of activity:	24 / 7 - every weekday
Location of activity:	From the Darwin LNG plant to outer northern limits of the Port of Darwin. Start Position DLNG: Latitude: 12°31.54 S. Longitude: 130°51.69 E End Position: Latitude 12° 19.920 S. Longitude: 130° 40.095 E
Assets/ Vessels involved	Sandpiper - shallow water pipe lay barge - pipeline installation - call sign: 9HA5721. Rawabi Topaz - anchor handling activities - call sign: YDVK2 Pacific Vulcan - towing / anchor handling activities - call sign: 9V7217 Fiona F - anchor handling activities - call sign: Vjn4602 Crest Apollo - pipe supply activity - call sign: 9V2442. Pacific Hawk - pipe supply activity - call sign: 9V2080 USV Blue Essence - survey activities by Fugro - call sign: VNW6226 Total Response - Guard boat activities and survey activities support vessel - call sign: VNW6226. Black Pearl - Guard boat activities - call sign: 4553883 Sea Darwin Olive Ridley - crew change - call sign: 456845 Sea Darwin Flatback - crew change - call sign: 444210
	Allseas pipe lay barge Sandpiper has commenced pipelaying operations. Sandpiper will operate with a 10-point mooring system with anchors extending up to 1315 m. The anchors will be marked by an orange-coloured buoy with white light, flash characteristic FL 3s (0.2,2.8)

	<p>The vessels Crest Apollo and Pacific Hawk will provide pipes to Sandpiper during the operation.</p> <p>The anchors will be handled by the anchor handling tugs Pacific Vulcan, Rawabi Topaz and Fiona F.</p> <p>The vessel Total Response and Black Pearl will act as a guard vessel to warn vessels not to enter operational area.</p>
Conducted by:	Allseas Marine Contractors Australia
Communication : Radio	VHF Ch 10 and 16
Mobile	<p>Sandpiper: +61 488 866 148</p> <p>Black Pearl: +61 457 433 329 (DTLS 24h emergency)</p> <p>Total Response: +61 474 898 197</p>
Additional information	<p>The Sandpiper pipe lay barge is restricted in its ability to manoeuvre due to the 10-point anchor mooring system and the connection to the pipeline.</p> <p>It will display required shapes and lights as per COLREGS.</p> <p>The vessels Crest Apollo and Pacific Hawk will transit regularly between the Sandpiper and the vessel Parkgracht supplying pipe sections on a regular basis.</p>
Cancel this notice on:	20 December 2024 (Estimated)

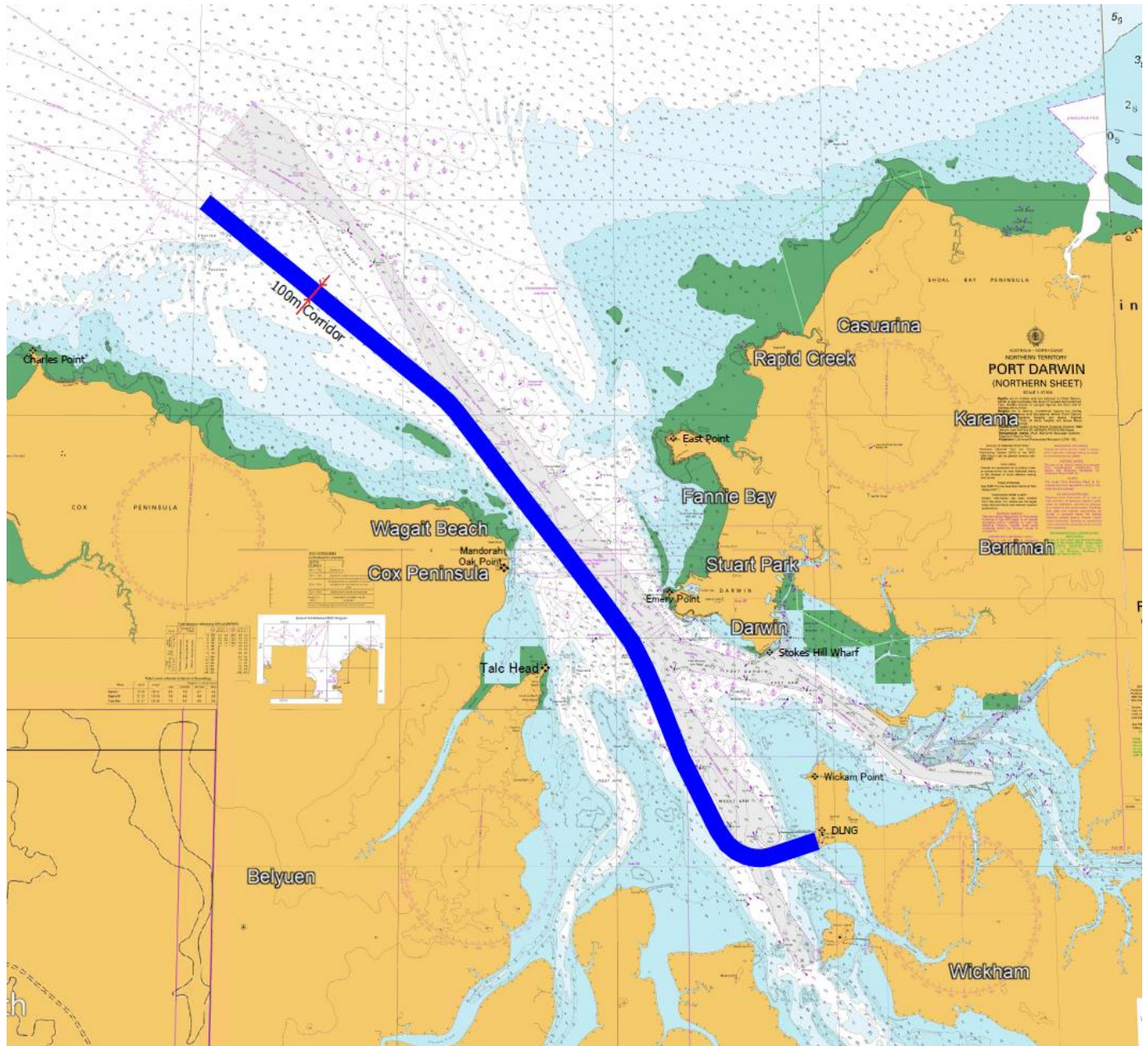
Capt. Anil Chadha

Regional Harbourmaster – Darwin

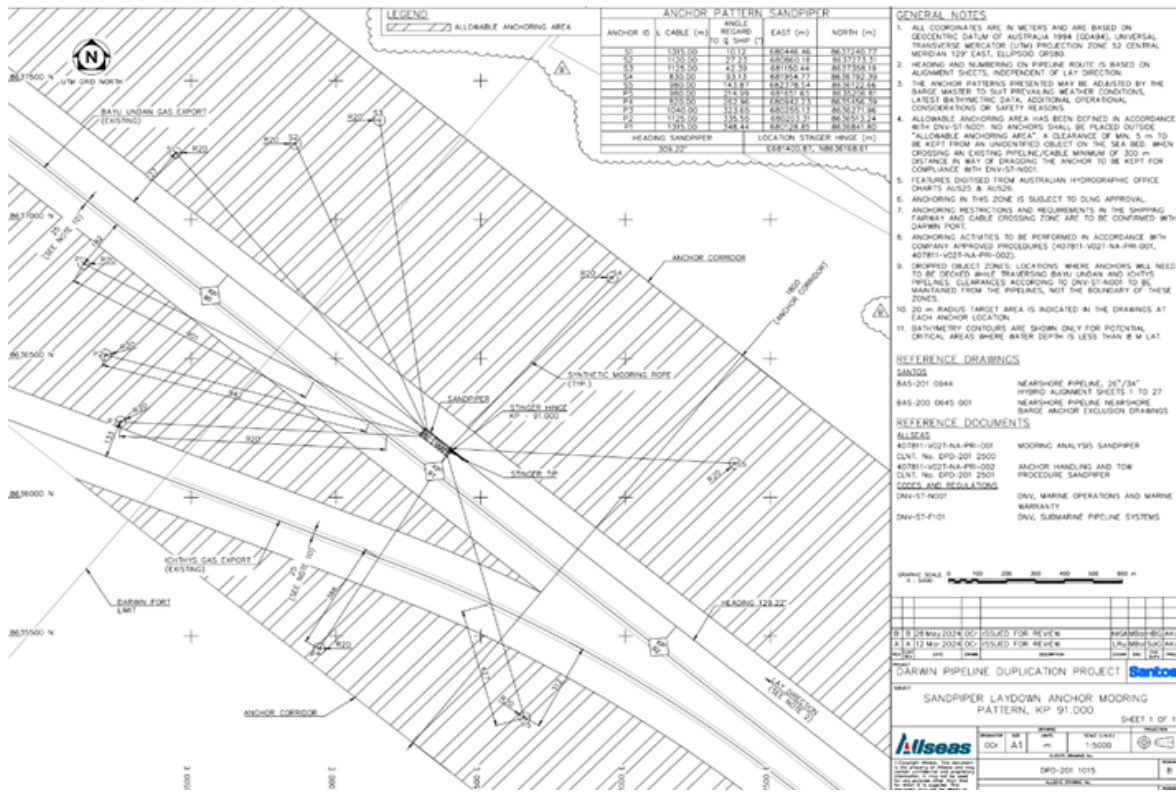
Exclusion zone identified by the anchor spread distance.



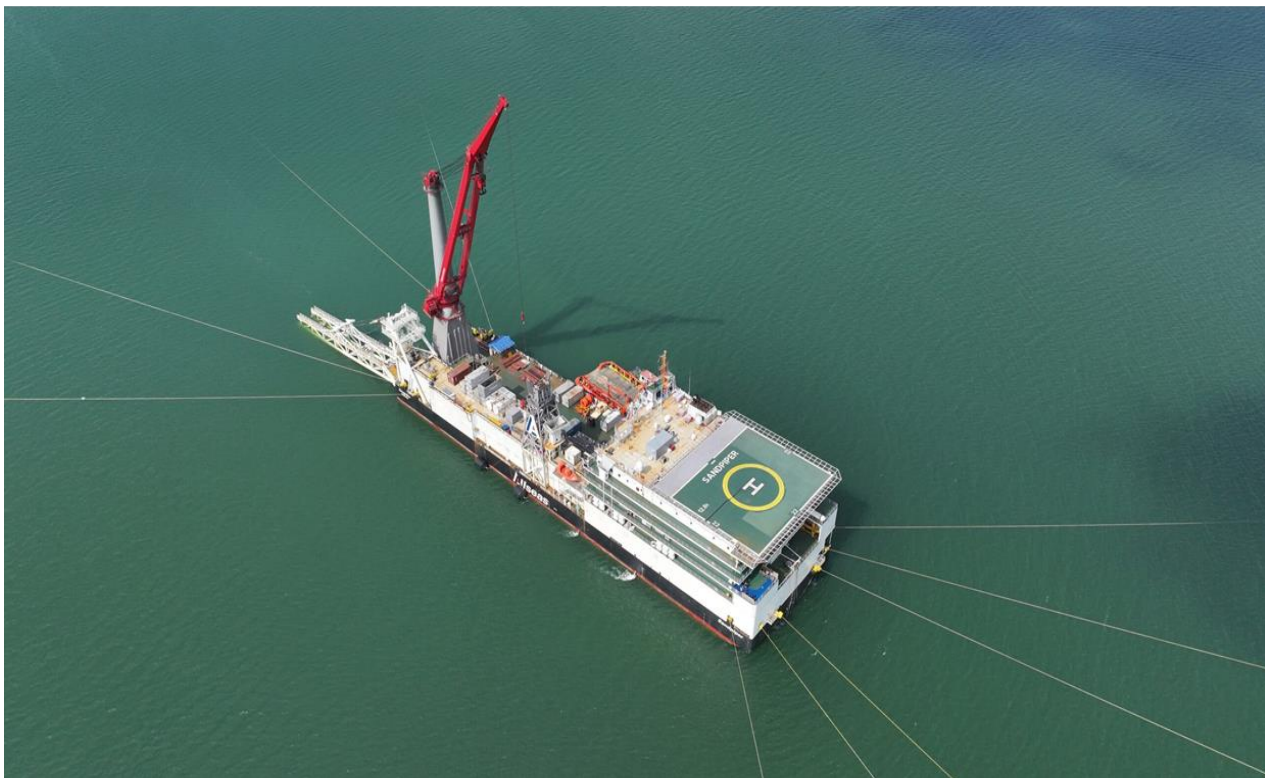
The 100m corridor for the pipe laying by vessel Sandpiper. Anchors will extend up to 1000 m from the vessel Sandpiper.



Aerial View diagram of Sandpiper Anchor spread



Example of Sandpiper Anchor spread showing extend of exposure of anchor wires in shoal water



Polyurethane Pennant Buoy marking Anchor Positions



Pipe Laying Barge Sandpiper



Guard Vessel Black Pearl

Guard boat *Black Pearl*



Guard Vessel Total Response

Guard boat *Total Response*



Pipe carrying vessel Parkgracht

Splithoff GCV Parkgracht



The pipe carrying vessel GCV Parkgracht will be anchored in the C anchorage

