

Local Notice to Mariners

Barossa Project: 4 anchors on the seabed near the DLNG

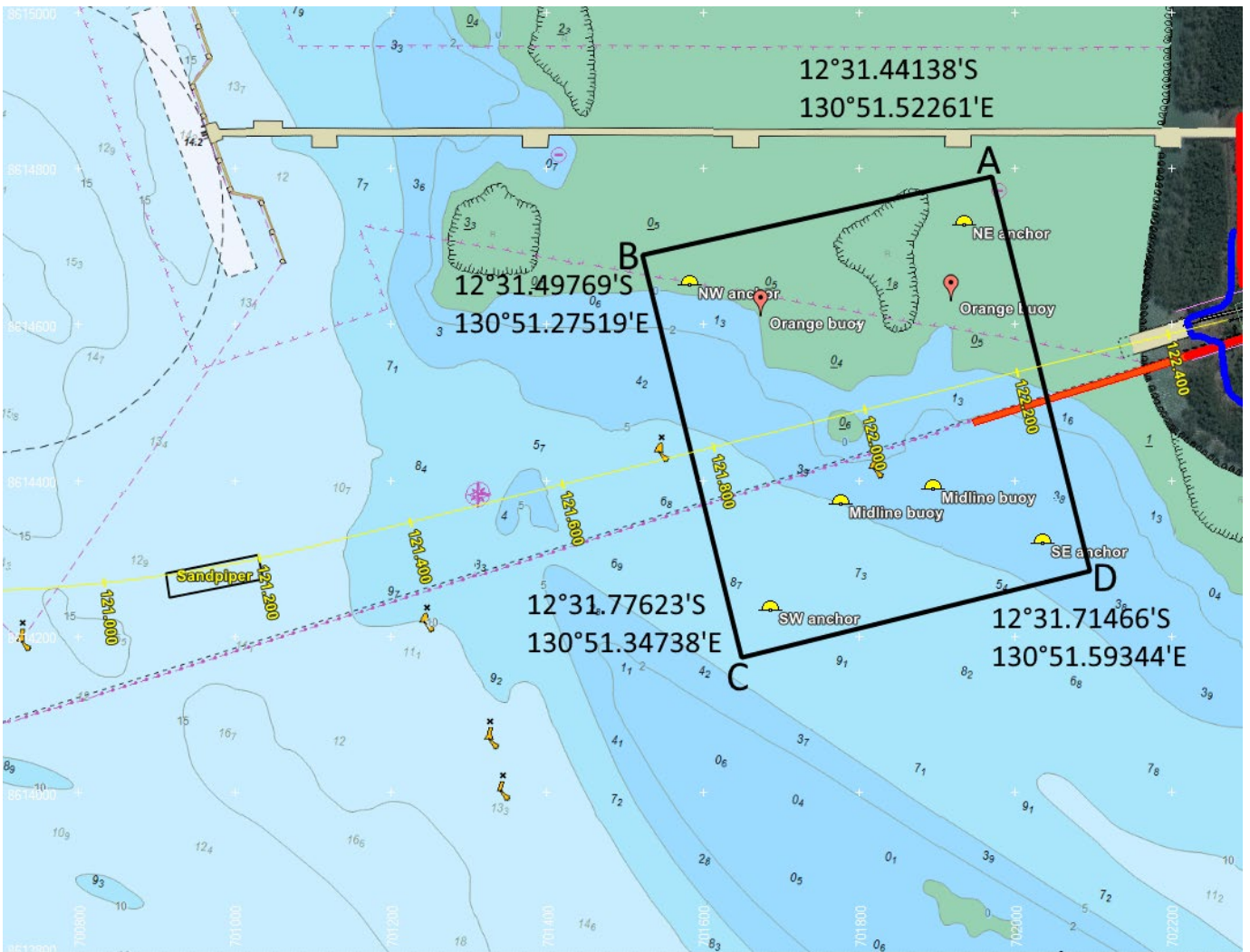
To	Port Users	Location	Off DLNG
Date of issue	8 October 2024	Ref number	Local NtM 091 (T)

Notification

Activity Details: Four anchors placed on the seabed near DLNG by DVO JV

Date of activity:	07 October 2024																																			
Time of activity:	00:00 – 24:00																																			
Location of activity:	Near the shore of the DLNG facility, south of the DLNG jetty in between of the coordinates given below																																			
Assets/ Vessels involved	Anchors of barge Arnhem Constructor have been left in position below. Multicat Fiona F will assist in the deployment of the anchors.																																			
Description of Activity:	<p>DVO JV has placed four anchors on the seabed near the DLNG facility which will be used by the Barge Arnhem Constructor in early November 2024. The anchors within the below coordinates and marked by yellow/orange buoys.</p> <table border="1"><thead><tr><th></th><th>LAT</th><th>LONG</th></tr></thead><tbody><tr><td>A</td><td>12°31.44'S</td><td>130°51.52'E</td></tr><tr><td>B</td><td>12°31.49'S</td><td>130°51.27'E</td></tr><tr><td>C</td><td>12°31.77'S</td><td>130°51.34'E</td></tr><tr><td>D</td><td>12°31.71'S</td><td>130°51.59'E</td></tr></tbody></table> <table border="1"><thead><tr><th>Anchor</th><th>Buoy marking the anchor position</th><th>Length of wire on seabed attached to anchor</th><th>The buoy marking the location of the end of the wire that is connected to anchor.</th></tr></thead><tbody><tr><td>NE 1</td><td>Yellow steel buoy with yellow light</td><td>100 m</td><td>Orange marker buoy</td></tr><tr><td>NW 1</td><td>Yellow steel buoy with yellow light</td><td>100 m</td><td>Orange marker buoy</td></tr><tr><td>SW 1</td><td>Yellow steel buoy with yellow light</td><td>200 m</td><td>Yellow midline buoy with yellow light</td></tr><tr><td>SE 1</td><td>Yellow steel buoy with yellow light</td><td>200 m</td><td>Yellow midline buoy with yellow light</td></tr></tbody></table>		LAT	LONG	A	12°31.44'S	130°51.52'E	B	12°31.49'S	130°51.27'E	C	12°31.77'S	130°51.34'E	D	12°31.71'S	130°51.59'E	Anchor	Buoy marking the anchor position	Length of wire on seabed attached to anchor	The buoy marking the location of the end of the wire that is connected to anchor.	NE 1	Yellow steel buoy with yellow light	100 m	Orange marker buoy	NW 1	Yellow steel buoy with yellow light	100 m	Orange marker buoy	SW 1	Yellow steel buoy with yellow light	200 m	Yellow midline buoy with yellow light	SE 1	Yellow steel buoy with yellow light	200 m	Yellow midline buoy with yellow light
	LAT	LONG																																		
A	12°31.44'S	130°51.52'E																																		
B	12°31.49'S	130°51.27'E																																		
C	12°31.77'S	130°51.34'E																																		
D	12°31.71'S	130°51.59'E																																		
Anchor	Buoy marking the anchor position	Length of wire on seabed attached to anchor	The buoy marking the location of the end of the wire that is connected to anchor.																																	
NE 1	Yellow steel buoy with yellow light	100 m	Orange marker buoy																																	
NW 1	Yellow steel buoy with yellow light	100 m	Orange marker buoy																																	
SW 1	Yellow steel buoy with yellow light	200 m	Yellow midline buoy with yellow light																																	
SE 1	Yellow steel buoy with yellow light	200 m	Yellow midline buoy with yellow light																																	

Conducted by:	DVO JV
Communication : Radio	VHF Ch 10 & Ch 16
Mobile	<ul style="list-style-type: none"> - Barge Arnhem Constructor: +61 400 939 584 - Operations team contact details - Bhagwan Marine: <ul style="list-style-type: none"> - Lee FITCH: +61 458 939 812 - Tynan BARTOLO: + 61 473 664 563
Additional information	DVO JV - +61 400 449 696 / +61 447 595 687
Cancel this notice on:	15 November 2024 tentative.



Yellow Steel Buoy



Capt. Anil Chadha

Regional Harbourmaster - Darwin
