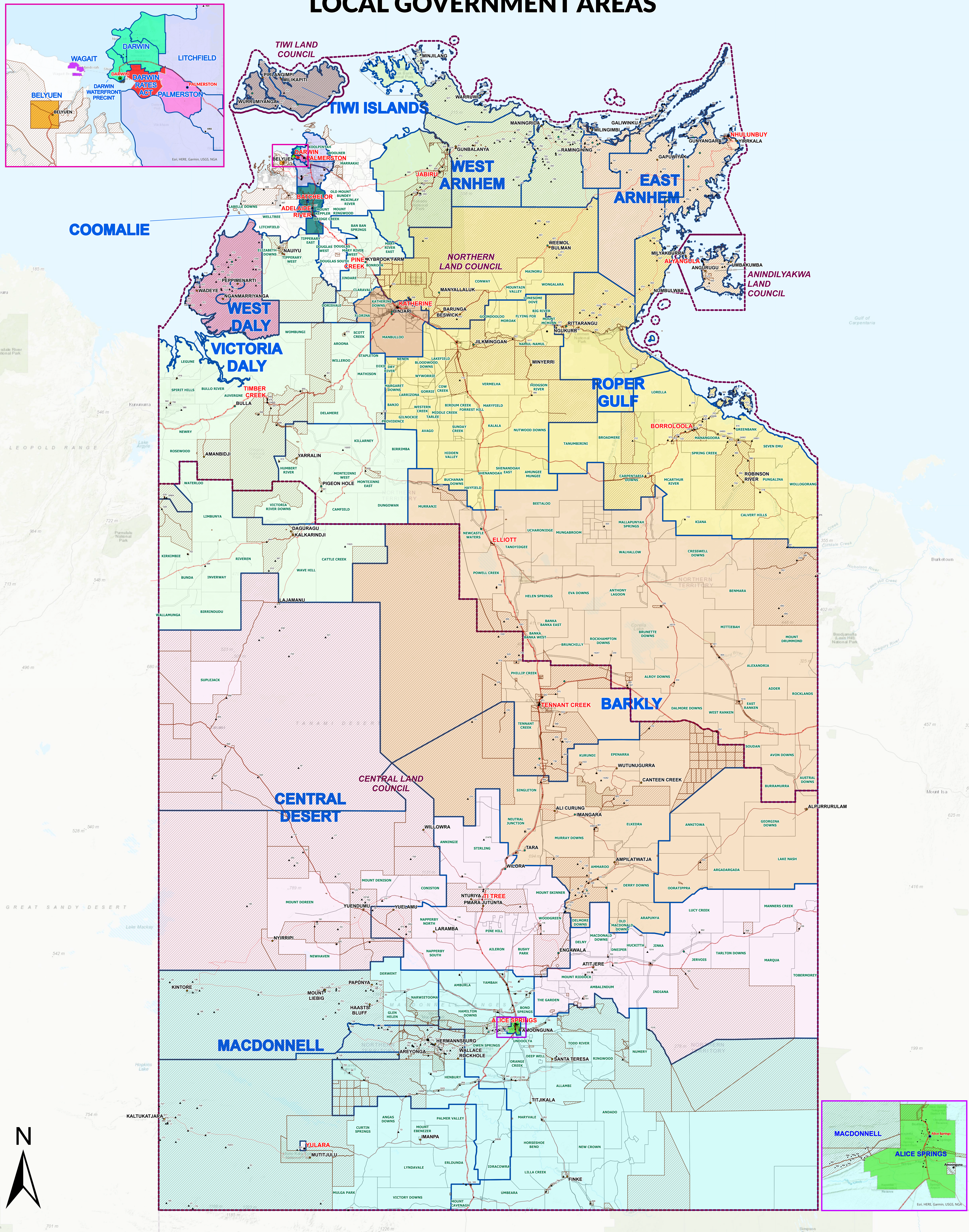


# NORTHERN TERRITORY LOCAL GOVERNMENT AREAS



## MAP DESCRIPTION

Local Government Areas, Wards, Land Councils and Land Trusts of the Northern Territory

## PRODUCTION INFORMATION

GDA\_1994  
Print Date: 3/08/2022  
Produced by: ED, RIET

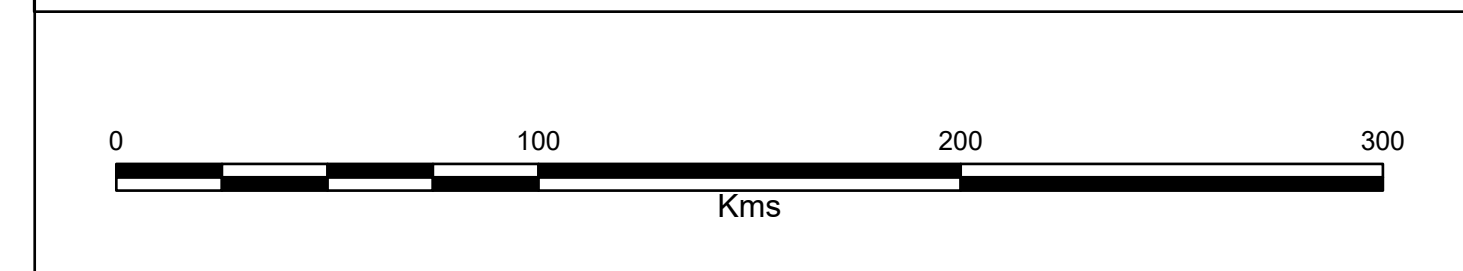
## LEGEND

- |  |   |   |   |
|--|---|---|---|
| <ul style="list-style-type: none"> <li>NT Localities</li> <li>City</li> <li>Town</li> <li>Major</li> <li>Minor</li> <li>Village</li> <li>00000 Family Outstation</li> <li>Town Camp</li> <li>Local Government Area (LGA)</li> <li>ALICE SPRINGS</li> <li>BARKLY</li> </ul> | <ul style="list-style-type: none"> <li>BELYUEN</li> <li>CENTRAL DESERT</li> <li>COOMALIE</li> <li>DARWIN</li> <li>DARWIN RATES ACT</li> <li>DARWIN WATERFRONT PRECINCT</li> <li>EAST ARNHEM</li> <li>KATHERINE</li> <li>LITCHFIELD</li> <li>MACDONNELL</li> <li>PALMERSTON</li> <li>ROPER GULF</li> </ul> | <ul style="list-style-type: none"> <li>TIWI ISLANDS</li> <li>UN-INCORPORATED (ALVANGULA)</li> <li>UN-INCORPORATED (COV DALY)</li> <li>UN-INCORPORATED (MARAKAL-DOUGLAS DALY)</li> <li>UN-INCORPORATED (NHULUNBUY)</li> <li>UN-INCORPORATED (YUEN)</li> <li>VICTORIA DALY</li> <li>WAGAIT</li> <li>WEST ARNHEM</li> <li>WEST DALY</li> </ul> | <ul style="list-style-type: none"> <li>Local Government Wards</li> <li>Aboriginal Land Councils</li> <li>ABORIGINAL LAND TRUSTS</li> <li>PASTORAL PROPERTIES</li> <li>Cadastre</li> <li>HIGHWAY</li> <li>ARTERIAL</li> <li>SECONDARY</li> </ul> |
|--|---|---|---|

## DISCLAIMER

The Northern Territory of Australia does not warrant that the product or any part of it is correct or complete and will not be liable for any loss, damage or injury suffered by any person as a result of its inaccuracy or incompleteness. You are encouraged to notify any error or omission in the material by emailing [bushtel@nt.gov.au](mailto:bushtel@nt.gov.au).

## SCALE



## KEY MAP

