

Commercial Barramundi Fishery Status Report 2025

Fishing season: 1 February – 30 September 2025

Catch

The total commercial catch of Barramundi for the 2025 fishing season was 84.5 tonnes and King Threadfin was 35.3 tonnes (Figure 1). Catches of both Barramundi and King Threadfin have decreased from the 2024 fishing season, continuing a declining trend in catches in the Barramundi Fishery across the last two decades.

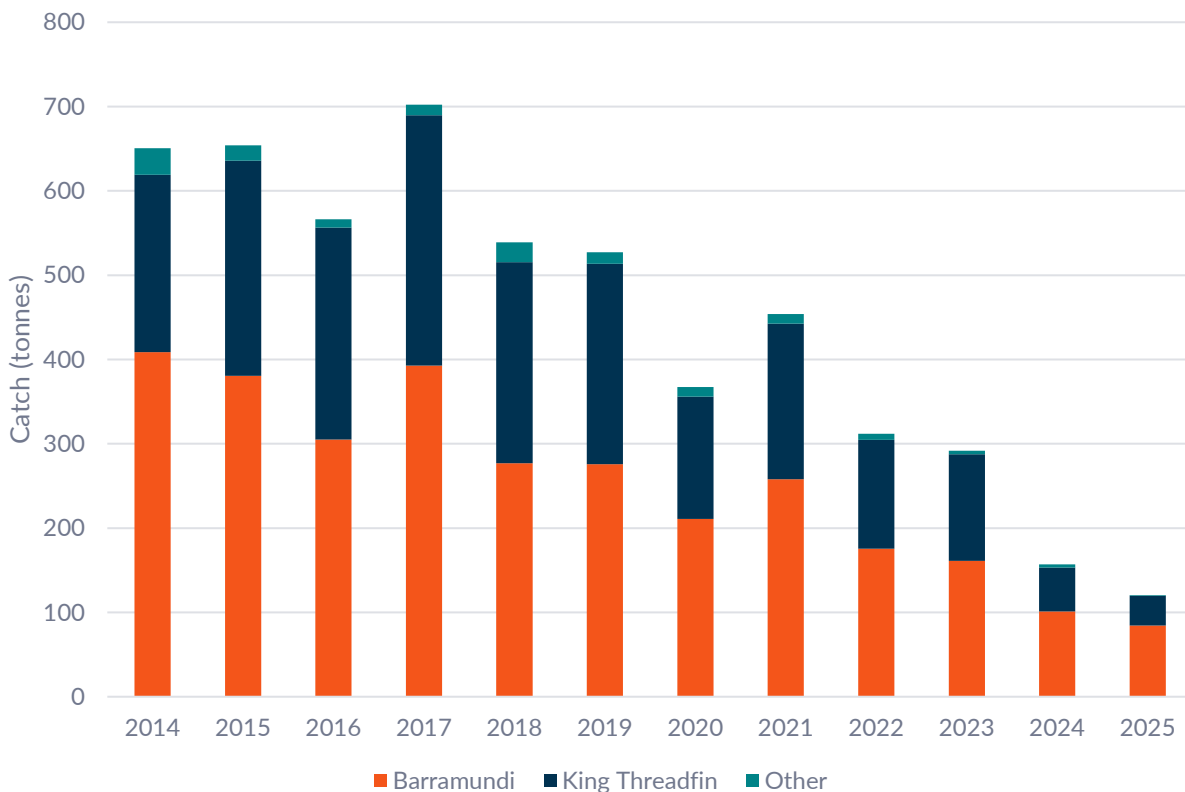


Figure 1. Catch composition of the Barramundi Fishery between 2014 and 2025.

Effort

Effort for the 2025 fishing season was reported as 3207 Hundred Metre Net Days (HMND) (Figure 2). HMND refers to the length of net (measured in units of 100 m) used each day by commercial fishers. The level of effort reported in 2025 is the lowest recorded in the history of the commercial Barramundi Fishery.

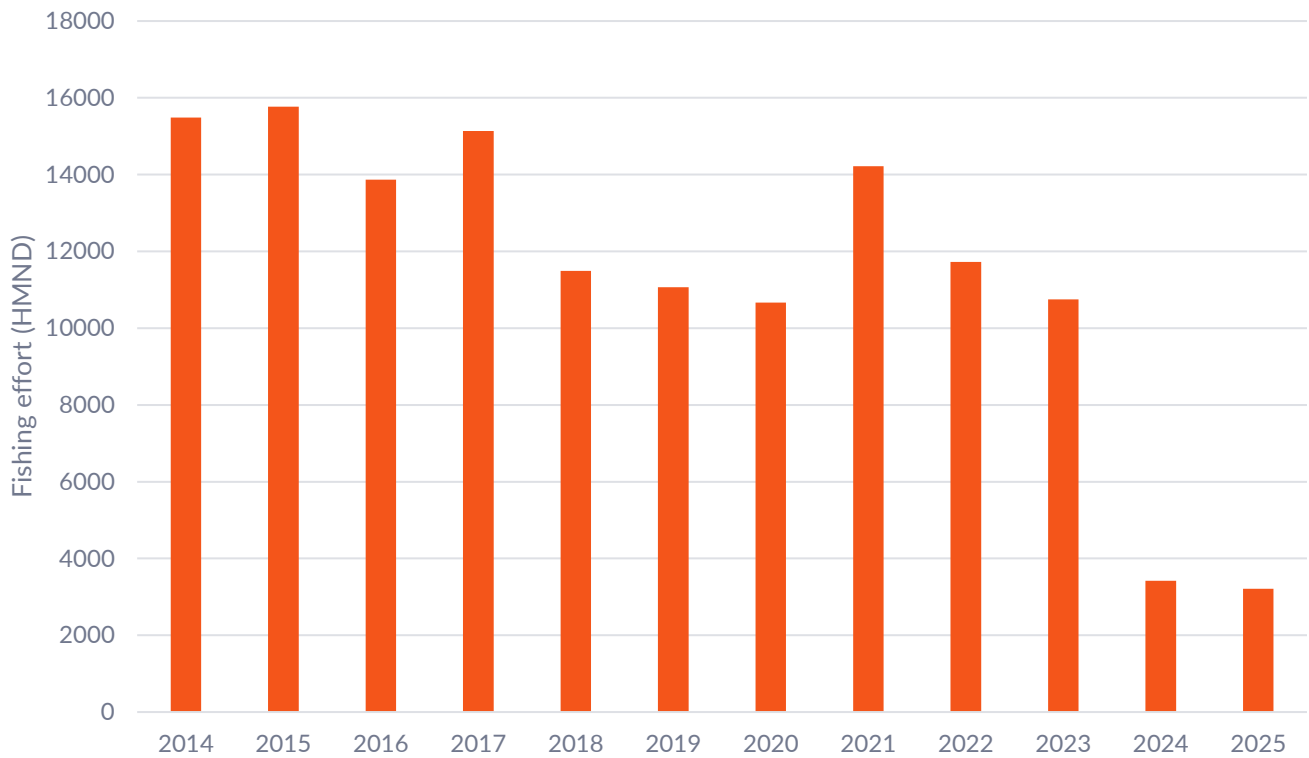


Figure 2. Effort levels in HMND by fishing season between 2014 to 2025.

Catch per Unit of Effort

The nominal Catch per Unit Effort (CPUE) is based on total catch in kilograms (kgs) divided by HMND. The CPUE was above the target reference point for each of the spatial management areas for Barramundi and King Threadfin (with the exception of Anson Bay, which was above the trigger reference point for King Threadfin) outlined in the Harvest Strategy. High CPUE in the fishery for the 2025 season is likely driven by generally above average rainfall during recent wet seasons across the Northern Territory.

Table 1. Commercial CPUE for Barramundi in the 2025 fishing season

Catchment	Daly River/ Anson Bay	Mini mini/ Alligator Rivers	Buckingham/ Arnhem Bay	Roper River
CPUE (kg/HMND)	21.31	29.33	NA	31.9
Target RP	18.79	19.26	22.53	24.36
Trigger RP	14.09	14.44	16.90	18.27
Limit RP	9.39	9.63	11.23	12.18

Table 2. Commercial CPUE for King Threading in the 2025 fishing season.

Catchment	Daly River/ Anson Bay	Mini mini/ Alligator Rivers	Buckingham/ Arnhem Bay	Roper River
CPUE (kg/HMND)	10.01	14.75	NA	16.26
Target RP	12.16	11.28	18.28	11.30
Trigger RP	9.12	8.46	13.71	8.48
Limit RP	6.08	5.64	9.14	5.65

Interactions with Threatened Endangered and Protected Species

The 2025 fishing season was the second-year commercial fishers operated under the Barramundi Fishery Threatened Endangered and Protected Species Strategy 2024-2029 (the strategy). For listed species under the strategy, there was a total of 109 sawfish interactions, with 103 of these released alive at the point of capture (Table 3).

Table 3. Species group specific total reported number of interactions and number of individuals released alive (in brackets) for the Barramundi Fishery in 2025.

Species Group	Coastal Dolphins	Dugong	Turtles	River Sharks	Sawfish
Number of interactions	0	0	0	0	109 (103)

Data validation

During the 2025 fishing season, two trips were monitored in the Barramundi Fishery. One trip was monitored using electronic monitoring (EM). Review of the EM footage confirmed that the system is appropriate for validating interactions with Threatened, Endangered and Protected Species (TEPS). However, several practical challenges were identified when deploying EM systems on smaller vessels. The second trip involved an on-board observer, and biological data was collected on Barramundi and King Threadfin, including length, weight, sex and age. The trip also provided independent verification of logbook information.