

# eID Tips

## Electronic Identification Devices (eID)

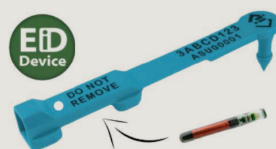


Northern Territory is replacing its mob-based visual tag traceability system with eID. From 1 January 2025 all sheep and goats will need to be identified with a National Livestock Identification System (NLIS) accredited eID device before leaving their property of origin.

### Tip 1: NLIS accredited eID devices have two unique numbers

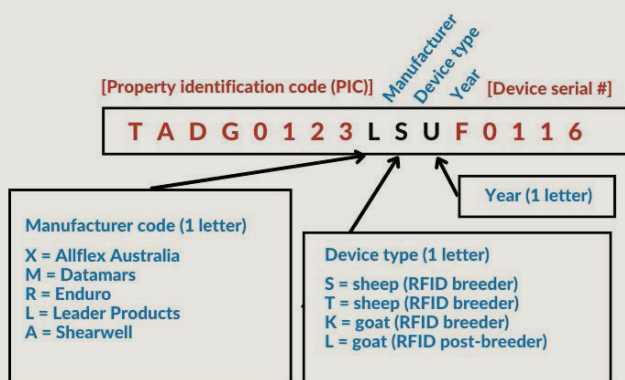
- Radio frequency identification (RFID) number – a non-visible 16-digit electronic microchip number that can be scanned with a handheld wand or panel reader.
- NLIS ID number – a visual number printed on the outside of the device representing the property identification code (PIC) of the property it was issued to, a reference to the device manufacturer, the device type (breeder or post breeder) and species, the year of manufacture, and a device serial number.

Example: Sky blue 'breeder' eID device for sheep manufactured by Leader Products and printed for this PIC in 2023.



Manufacturer: 9 8 1 Space Device serial #: 0 0 0 3 0 0 3 9 2 8 5 3

## Tagging requirements



Year		Colour
2015	2023	SKY BLUE
2016	2024	BLACK
2017	2025	WHITE
2018	2026	ORANGE
2019	2027	LIGHT GREEN
2020	2028	PURPLE
2021	2029	YELLOW
2022	2030	RED

**PINK**  
Post-breeder tags must be pink

### Tip 2: There are two types of eID devices

- Breeder devices are used to permanently identify animals before they leave their property of birth.
- Post breeder devices are used to permanently identify animals introduced onto a property that have not been eID tagged or have lost their original devices.
- Animals should only be tagged with one eID device.
- Once an animal has been tagged, the device must remain with the animal for life and cannot be removed.
- **Fill out the NLIS purchase order form and email it to [ntnlis@nt.gov.au](mailto:ntnlis@nt.gov.au)**

### Tip 3: eID devices come in different colours

- NLIS accredited breeder eID devices use a year of birth (YOB) colour system.
- The YOB colour system is voluntary in the Northern Territory. This means any devices left over from one year can be used the following year.
- Post breeder eID devices are pink for any year.
- If you buy sheep or goats, you need a supply of pink post breeder eID devices to use if it loses its breeder device.

### Tip 4: Devices are species specific

- eID devices can only be used on the type of livestock they are purchased for, meaning sheep devices for sheep, and goat devices for goats. The species is recorded against each identification number on the NLIS database.

### Tip 5: eID numbers are linked on the NLIS database

- RFID and NLIS ID numbers are linked together on the NLIS database. Either number can be used to record a movement.
- eID device numbers are automatically registered to your PIC on the NLIS database by the manufacturer when they are purchased.
- You do not need to scan or transfer animals when you apply the devices as they are already registered to your PIC.
- To help keep track of your eID devices you need an NLIS account at [nlis.com.au](http://nlis.com.au)

### Contact

#### Darwin region

P: 08 8999 2034 M: 0401 115 802  
 P: 08 8999 2083 M: 0448 480 219

#### Alice Springs region

P: 08 8951 8125 M: 0401 118 125

#### Tennant Creek region

P: 08 8962 4492 M: 0457 517 347  
 P: 08 8962 4458 M: 0499 971 094

#### Katherine region

P: 08 8973 9767 M: 0467 740 233  
 P: 08 8973 9765 M: 0427 604 002