

Local Notice to Mariners

Subsea Survey with Un-crewed Surface Vessel (USV)

To	Port Users	Location	Darwin Harbour
Date of issue	11 October 2024	Ref number	Local NtM 2024 - 095

Notification

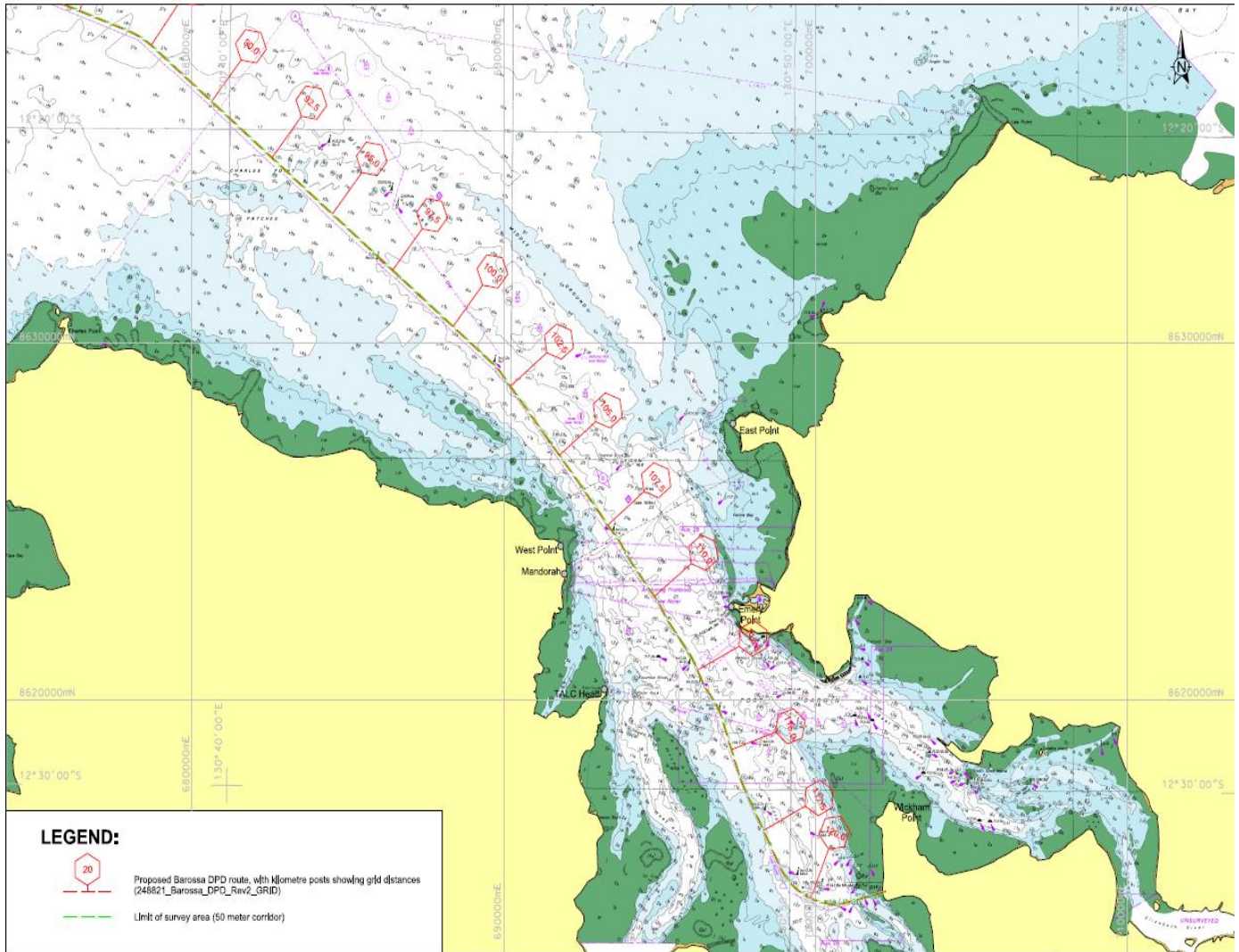
Port Users are advised that the Fugro Unmanned (Un-crewed) Surface Vessel (USV) 'Fugro Kwilena' will undertake subsea survey and construction operations in Darwin Harbour.

Date of activity:	Start 15 th October, 2024
Time of activity:	24 / 7 - every week-day
Location of activity:	From the onshore Darwin LNG plant to outer limits of the Darwin port limits as per route shown in the attached sketch. Start Location DLNG: Latitude: 12°31.54'S Longitude: 130°51.69'E
Assets/ Vessels involved	Fugro Kwilena - LOA 11.75 m is the USV Total Response LOA 19.98 m is the support vessel for the USV
Description of Activity:	The Un-crewed (Unmanned) Surface Vessel (USV) Fugro Kwilena will initially undertake a Pre-Lay Survey , transiting along the pipe lay route using hull mounted and Remotely Operated Vehicle (ROV) mounted sensors to obtain hydrographic data of the lay route.
Conducted by:	Fugro Australia Pty Ltd
Communication : Radio	VHF Ch 10 and 16
Mobile	Fugro Kwilena Control Room: 0438 660 400 Fugro Kwilena Darwin Contact: 0407 022 215 Total Response Vessel Master: 0474 898 197
Additional information	USV support vessel and Guard Vessel will monitor the area around the USV and Sandpiper
Cancel this notice on:	1 st March 2025 (tentative)

Capt. Anil Chadha

Regional Harbourmaster – Darwin

Limit of Survey area by USV 50m corridor around the broken line shown in green



Unmanned Surface Vessel – ‘Fugro Kwilena’



Support Vessel – ‘Total Response’

