

# R Nature Notes

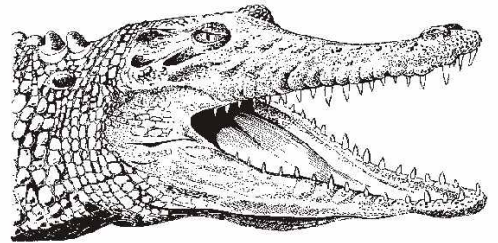
Junior Ranger

## LIVING WITH CROCODILES

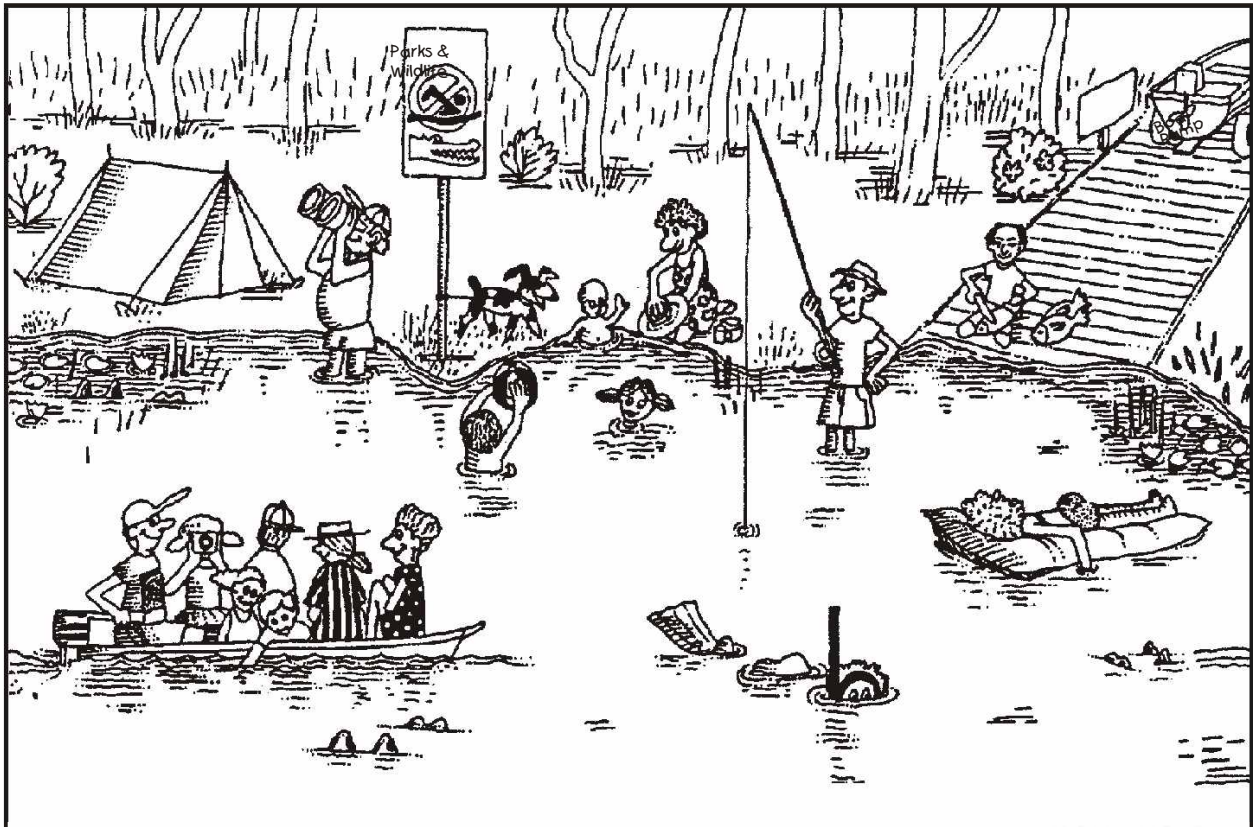
Saltwater (Estuarine) Crocodiles are dangerous animals which inhabit many Top End waters. You won't get eaten if you obey a few simple rules.

Rangers try to remove crocodiles from popular recreational spots. However, caution is always required when enjoying Top End rivers and billabongs.

Imagine you are a Ranger and come across the following scene while out on patrol. Circle all the things that might attract a hungry crocodile.



Saltwater (Estuarine) Crocodile  
*Crocodylus porosus*

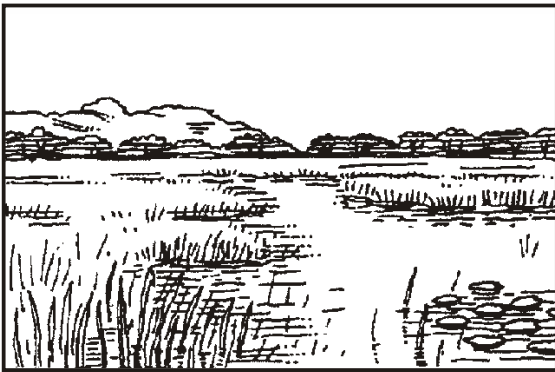


## WHERE SALTIES LIVE

Saltwater (Estuarine) Crocodiles live in coastal waters, wetlands and tidal rivers. But you may also spot them as far as 300 km from the coast.

Beware of 'Salties' in the following places. Use the grid to decode their names. (To decode each letter find the square where the letter row meets the number row).

B1 C2 C5 C5 A4 D1 C2 A1 B4 C4



A2 B4 C2 C2 A1 A2 C5 C4 B2



	1	2	3	4	5
A	A	B	C	D	E
B	F	G	H	I	J
C	K	L	M	N	O
D	P	Q	R	S	T
E	U	V	W	X	Y

D1 A1 D1 A5 D3 A2 A1 D3 C1 D4 E3 A1 C3 D1



Be especially careful about swimming in

C3 E1 A4 A4 E5 E3 A1 D5 A5 D3

Use commonsense when fishing, swimming and camping. Always observe the crocodile warning signs.



Want to learn more about crocodiles?

Check out the reference book *Australian Crocodiles* by Grahame Webb and Charlie Manolis.

