

# Local Notice to Mariners

## Barossa Project: Nearshore Rock Installation and Barge Operations – Darwin Harbour

<b>To</b>	Port Users	<b>Location</b>	Off DLNG Plant - Darwin Harbour
<b>Date of issue</b>	7 November 2024	<b>Ref number</b>	Local NtM 2024 – 099 (T)

### Notification

Port Users are advised that DVO JV are conducting nearshore rock installation on the seabed with additional barge operations in Darwin harbour, for placing rock protection on top of the Barossa pipeline.

<b>Date of activity:</b>	11 November 2024 onwards															
<b>Time of activity:</b>	Continuous operations, 24/7 each day of the week															
<b>Location of activity:</b>	The nearshore rock installation is to be conducted near the DLNG facility in the south in the area shown by yellow lines in the sketch. The barge will conduct regular trips from rock installation location to East Arm Wharf to load rocks.															
<b>Assets/ Vessels involved</b>	Barge: <b>Arnhem Constructor</b> , assisted by: Multicat: <b>Fiona F</b> Tug: <b>Total Assist</b> Survey Vessel: <b>Warrigal</b>															
<b>Description of Activity:</b>	<p>The barge <b>Arnhem Constructor</b> will be working, utilising 6 anchors and a mooring anchor, along the below working zone shown by yellow lines and transit to East Arm Wharf on a regular basis for loading of rock.</p> <p>The Barge will operate within the following working zone:</p> <table border="1"><thead><tr><th></th><th>Latitude</th><th>Longitude</th></tr></thead><tbody><tr><td>A</td><td>12° 31.456' S</td><td>130° 51.587' E</td></tr><tr><td>B</td><td>12° 31.563' S</td><td>130° 51.137' E</td></tr><tr><td>C</td><td>12° 31.823' S</td><td>130° 51.200' E</td></tr><tr><td>D</td><td>12° 31.706' S</td><td>130° 51.657' E</td></tr></tbody></table> <p>The Fiona F and Total Assist will assist the Arnhem Constructor with anchor handling and towing operations.</p> <p>Vessels are requested to maintain 250m distance from the rock laying barge while it is operating within the rock laying work zone.</p> <p>The vessel Fiona F, Total Assist and /or Warrigal will inform approaching vessels and assist the barge in maintaining clearance zone of 250m.</p>		Latitude	Longitude	A	12° 31.456' S	130° 51.587' E	B	12° 31.563' S	130° 51.137' E	C	12° 31.823' S	130° 51.200' E	D	12° 31.706' S	130° 51.657' E
	Latitude	Longitude														
A	12° 31.456' S	130° 51.587' E														
B	12° 31.563' S	130° 51.137' E														
C	12° 31.823' S	130° 51.200' E														
D	12° 31.706' S	130° 51.657' E														

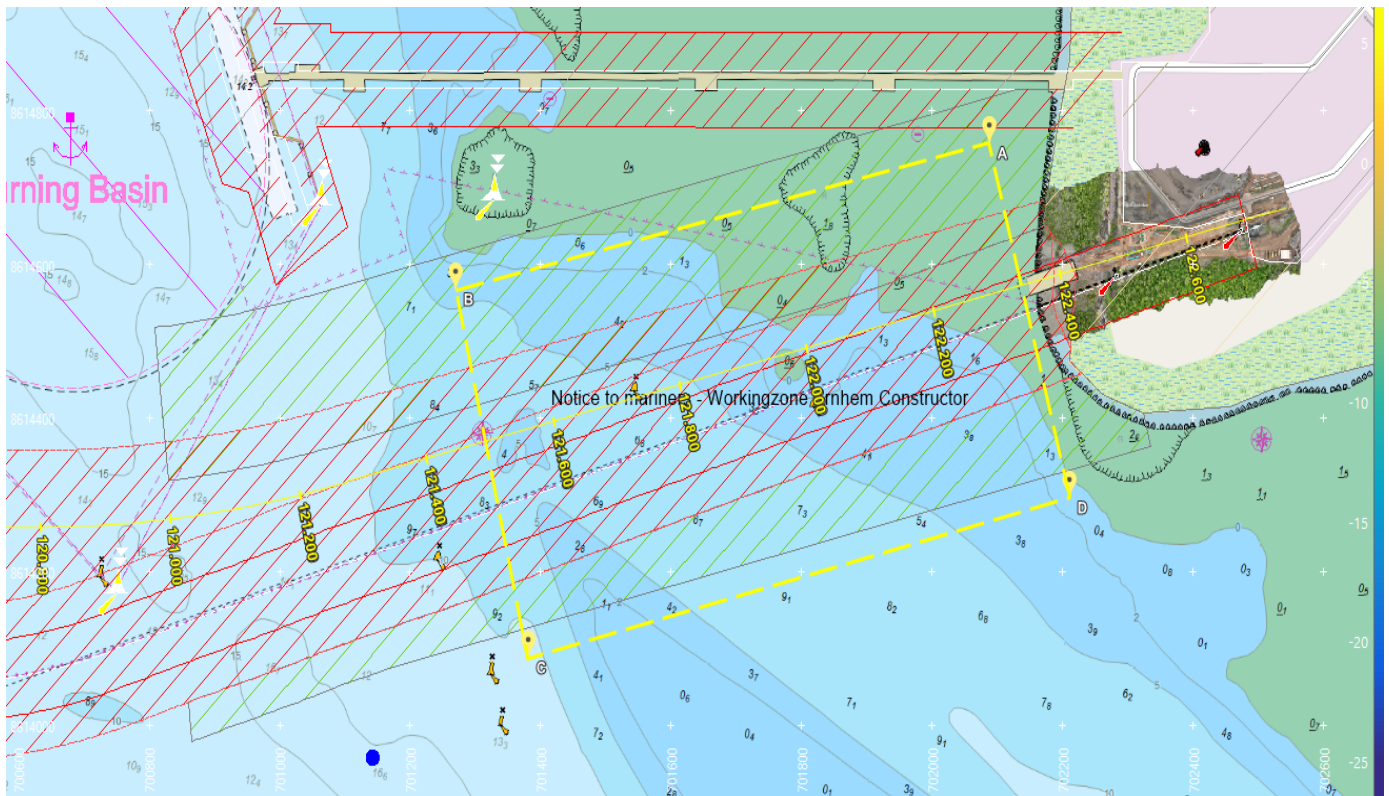
<b>Conducted by:</b>	DVO JV
<b>Communication : Radio</b>	Vhf Ch. 16 & Ch. 10
<b>Mobile</b>	DVO JV – Operational department contact details: - Works Manager: +61 400 449 696 / +61 447 595 687
<b>Additional information</b>	
<b>Cancel this notice on:</b>	15 December 2024 (Tentative)

Jon Abbey

A / Regional Harbourmaster – Darwin

---

## Arnhem Constructor – working zone (between yellow pecked lines).



## Vessels conducting the nearshore rock installation operations.

Vessel Type	Vessel Name	Call Sign	LOA [m]	Breadth [m]	Remarks
Barge	Arnhem Constructor	Arnhem Constructor	64.0	18.3	Working with 4 anchors during rock installation
Multicat	Fiona F	VJN4604	24.5	11.0	Assisting Arnhem Constructor with anchor handling and towing Arnhem Constructor
CTV + Survey vessel	Warrigal II	VJN4140	15.2	6.0	Providing CTV support and survey support during operations
Assisting Tug	Total Assist	VNW6307	21.4	6.1	Assisting Fiona F with moving and positioning Arnhem Constructor

---