

Local Notice to Mariners

Submarine Cable Installation across Darwin Harbour

To	Port Users	Location	Mindil Beach to Mandorah
Date of issue	10 July 2024	Ref number	Local NtM 2024 - 041 (T)

Notification

Date of activity:	Diving works from 10 July 2024 to 02 August Cable Laying from 16 July to 02 August
Time of activity:	0600 to 1800 each day
Location of activity:	Across Darwin Harbour from Mindil Beach to Mandorah
Assets/ Vessels involved	Diving works: - Vessel 'Moresby' Cable Lay: Vessels 'Moresby', 'Wickham Constructor', 'Ginga' and 'Akama'.
Description of Activity:	<p>A submarine cable is to be installed from Mindil Beach across the harbour to Mandorah, involving the use of a cable barge and dive team to lay the cable between the two points shown on the attached map.</p> <p>Diving operations will be performed before and after the cable has been laid to carry out protective measures on the submarine cable. During diving operations, a diver will be underwater and can be as far as 50m away from the diving vessel.</p> <p>To ensure safety of diver and waterways users, all vessels and persons are to keep clear all around the diving vessel by a minimum distance of 60m.</p> <p>During cable laying operations, the barge will be restricted in its ability to manoeuvre and presents a risk to other users of the waterway. The barge will display "Restricted in Ability to Manoeuvre" lights and shapes to signal its reduced manoeuvrability.</p> <p>To ensure safety, all vessels and persons must keep clear all around the barge by at least 50m.</p>
Conducted by:	Dive Co Pty Ltd
Communication : Radio	VHF Ch. 10 & Ch. 74
Mobile	<ul style="list-style-type: none">Jared Darcey - Shore Coordinator/Dive Supervisor 0436 646 114Grant Gaston-Johnston - Lay Coordinator 0403 316 552Darwin Port - Harbour Control 08 8919 0821 / VHF Ch 10

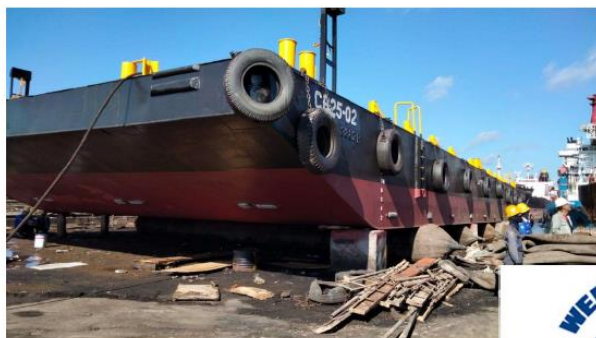
Additional information

Cancel this notice on:

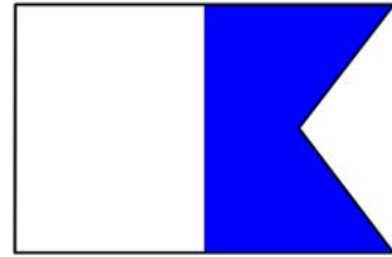
TBA

Capt. Anil Chadha

Regional Harbourmaster - Darwin



The dive vessel will display "Flag Alpha" to signal diving operations.



Restricted in Ability to Manoeuvre: 50m Exclusion.

Flag Alpha: 60m Exclusion.



GINGA
DAMEN MULTICAT

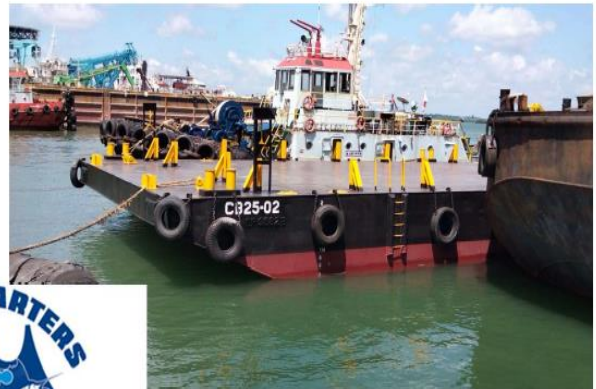




Wickham Constructor (CB 25 – 02) Spec Sheet

Steel Dumb Barge

Year Built:	2016
Use:	Flat Top Barge – Suitable for berthing facilities
Length (overall):	36.58 m
Breadth:	12.19 m
Depth:	2.44 m
GRT:	283T
Deck Strength:	7.5T / m ²
Draft (Summer Loadline):	1.85 m
Deck Equipment:	Smit Brackets, Bollards, Strong Hand rails



MORESBY

Launch / Workboat / Utility

Security / Crew Transfers

Environmental / Survey

Eco / Standby / Support



Akama

Tug

www.polarismarine.com.au



MAIN PARTICULARS

Design	Tug
Year Built	2011
Flag	Australia
Survey	NSCV 2C
Class	N/A
GRT	130t
Max DWT	N/A
Length	14.80m
Moulded Breadth	6.5m
Moulded Depth	3.0m
Draft	1.8m
Deck Capacity	6m ²

PERFORMANCE

Max Speed	10kt
Bollard Pull	10.7t
Fuel Consumption	80L p/h

DECK EQUIPMENT

Towing Hook	20t
Towing Winch	YES
Drum Capacity	400m
Tugger Winch	N/A
Capstan	N/A
Stern Roller	N/A

AUXILIARY

Generator	35KVA
Supply System	Battery Sets 240v / 24V

PROPULSION & MACHINERY

Main Engines	Yanmar
Power Rating	2 x 405 Bhp
Gear Boxes	Reintjes
Propellers	Twin Screw
Steering Gear	Powered Hydraulic Independent Steerable Nozzles