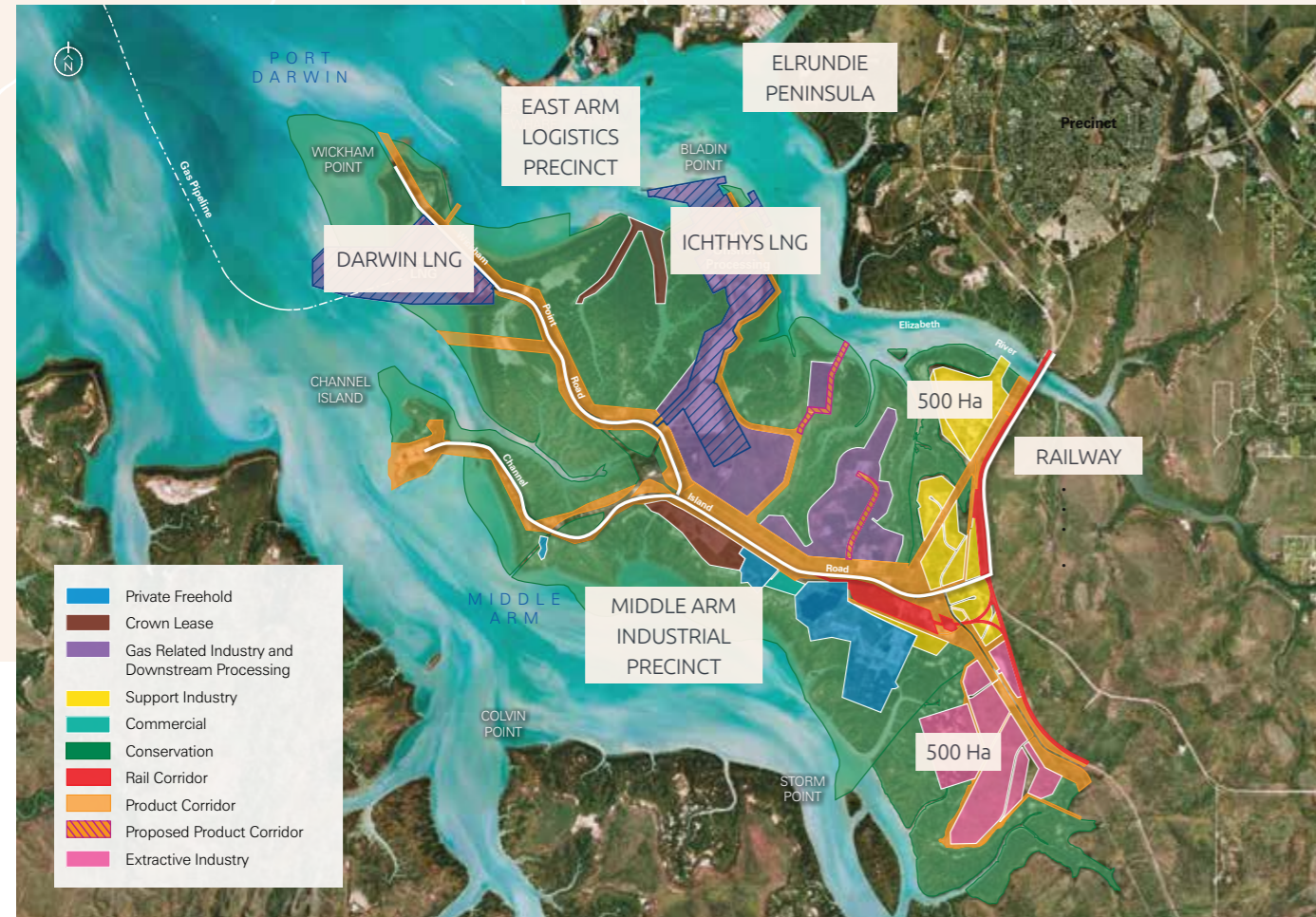


# Land and infrastructure

Industrial land is available at Middle Arm for the minerals processing and manufacturing industry. Darwin is linked by a transcontinental rail service, national highway, international airport and supported through the nearby Port of Darwin at the East Arm Logistics Precinct.



Land available for industrial development at Middle Arm, Elrundie Peninsula and support infrastructure at East Arm Logistics Precinct.

# Territory Government support

A number of attractive services and support mechanisms to grow private sector investment and create jobs:

### Resourcing the Territory Initiative

\$26 million initiative providing pre-competitive geoscience, investment attraction and exploration stimulus programs designed to increase exploration activity and success rates, and underpin the long term sustainability of the resources sector.

### Major Project Status Policy

Support the timely and efficient delivery of such projects through consistent and efficient government processes.

### Local Jobs Fund

\$89 million co-investment fund to accelerate significant projects through loan guarantees, business investment concessional loans, equity co-investment and grants.

### Market Led Proposals Policy

Generate, advance and promote development of innovative private sector proposals to advance economic development through a fair and transparent process.

**Northern Territory Geological Survey**  
 Department of Primary Industry and Resources  
 Northern Territory Government, Australia  
 P: +61 8 8999 1385  
 E: resources.investment@nt.gov.au  
 resourcingtheterritory.nt.gov.au

**Strategic Infrastructure and Projects**  
 Department of Trade, Business and Innovation  
 Northern Territory Government, Australia  
 P: +61 8 8999 6167  
 E: sip@nt.gov.au  
 business.nt.gov.au



# The Territory Critical Minerals Plan

## VISION

The Territory is a globally significant critical minerals producing, processing and manufacturing centre

## 3 Point Plan

1. Accelerate exploration for critical minerals
2. Support critical minerals projects to commence production
3. Grow refining, processing and manufacturing of critical minerals in the Territory



Images of the critical minerals value train showing exploration, processing and manufactured products including electric cars





# Current and developing projects

The Territory is a world leader in manganese production, with one of the world's largest high-grade manganese deposits at Groote Eylandt and further deposits at Bootu Creek. There are a number of other projects with potential to commence production.

## Lithium

Grants Lithium Project, Core Lithium Ltd  
Resource: 8.6 Mt @ 1.33% lithium oxide  
Capex: \$54M  
Environmental assessment lodged  
Proposed Schedule: 2019/20

- proposed open cut mining operation
- mineral lease granted Jan 2019

## Vanadium

Mount Peake, TNG Ltd  
Resource: 160.4 Mt @ 0.28% vanadium pentoxide  
5.3% titanium oxide  
23% iron  
Capex: Stage one \$853M  
Environmental assessment complete  
Proposed Schedule: Q3 2021

- one of the world's largest vanadium-titanium-iron resources
- TIVAN® processing plant planned in Darwin
- high-purity vanadium electrolyte, with potential to supply the Vanadium Redox Battery sector

## Copper

Jervois, KGL Resources Ltd  
Resource: 25.2 Mt @ 1.53% copper  
29.2 g/t silver  
Capex: \$190M  
Environmental assessment lodged  
Proposed Schedule: Q2/3 2020

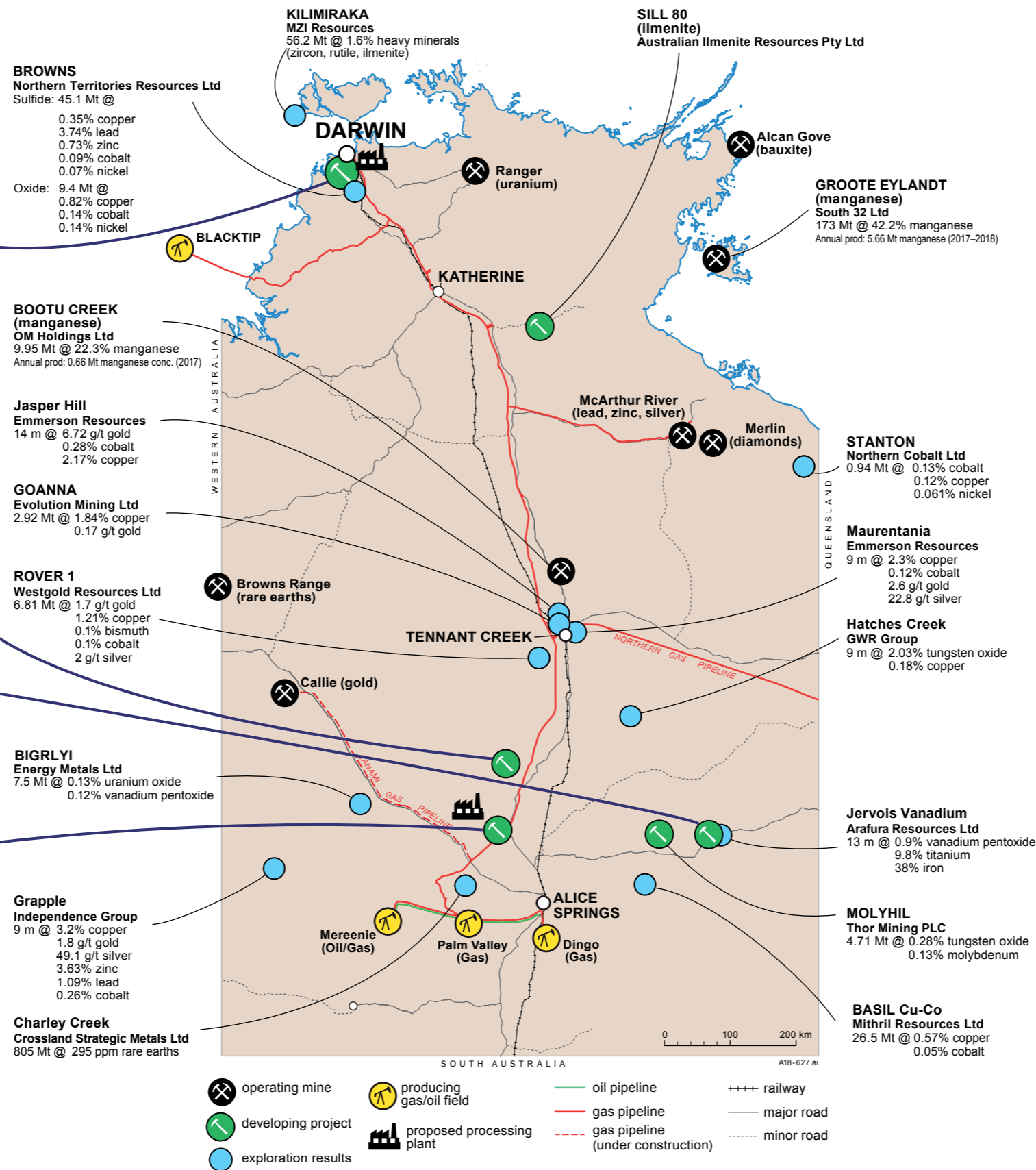
- open cut and underground operation
- 12+ years lifespan

## Rare Earths

Nolans, Arafura Resources Ltd  
Resource: 56 Mt @ 2.6% rare earths  
11% phosphate  
0.02% uranium oxide  
Capex: US\$726M  
Environmental assessment complete  
Proposed Schedule: Q1 2022

- one of the world's largest neodymium-praseodymium (NdPr) deposits
- potential to produce around 10% of the global demand for NdPr magnet feed
- processing planned onsite

The Territory has numerous other critical minerals projects at various stages from exploration through to near production, including for copper, cobalt, tungsten, zircon and ilmenite.



# The Territory's critical minerals

- Co** cobalt
- Ti** titanium
- W** tungsten
- Cu** copper
- Mn** manganese
- V** vanadium
- Li** lithium
- REE** rare earths
- Zr** zircon

## Critically important minerals

Critical minerals are mineral resources that are strategic to the global economy, particularly for new and emerging technologies.

These currently include rare earths and other high value technology metals, used for making batteries, electric vehicles, mobile phones, high-definition screen displays, solar panels, medical equipment and for military technology use.

The Territory is focused on increasing its participation in the latter stages of the critical minerals value chain and is actively seeking investment to support this goal.

Value-add opportunities	Export opportunities
Mining	Unrefined minerals
Refining	Refined minerals
Processing	Metals
Manufacturing	Product components
End user products	Product exports

The Territory Government is collaborating with the Australian Government, and other states and territories on the development of the *National Critical Minerals Work Program* and is developing a comprehensive *Territory Minerals Industry Development Strategy*.

## Investment opportunities

- **Exploration stage projects** to define resource and demonstrate economic viability
- **Critical minerals projects** with most approvals in place
- Domestic **refining, processing and manufacturing** technologies and facilities